

document management.  
**Easy. Fast. Smart.**

# docSTAR™ SmartLink.™

## Improving your business... creating solutions for specific business problems!

docSTAR SmartLink™ is a powerful integration tool that connects docSTAR to your business application. Integrated retrieval makes relevant docSTAR documents available instantly, with a single click, from within the applications that you use on a daily basis. SmartLink leverages the data you have already collected to accurately and conveniently file/retrieve documents in docSTAR.

### With docSTAR SmartLink:

- ★ Reduce tedious filing steps.
- ★ Improve workplace efficiency.
- ★ Avoid errors with better filing consistency.
- ★ Train staff faster.
- ★ Improve customer service.
- ★ Reduce overall costs.

visit us at [www.docstar.com](http://www.docstar.com)



**Business Concerns...**

You use a line-of-business application for most of your daily activities. It may be specific to your industry (Real Estate, Insurance, Healthcare) or department (accounts payable, accounts receivable, ERP).

The concern is that you go to your application to record a transaction; then you go to docSTAR to file a document. Are you typing the same information twice? You're looking up in your business application and you realize that you need to lookup the original document image. Do you have to launch docSTAR and look up the same file that you are already working on?

- ★ Work is duplicated.
- ★ Increased chances for error.
- ★ Employees need to learn yet another application.
- ★ Efficiency and productivity ultimately suffer.

**The Solution...SmartLink!**

Simplify your life and integrate your business systems with docSTAR SmartLink.

**With docSTAR SmartLink:**

- ★ Dramatically increase employee productivity.
- ★ Improve workplace efficiency.
- ★ Enhance filing accuracy.
- ★ Superior filing consistency.
- ★ Minimize employee training time.

**SmartLink's Unique Capabilities...**

Many line-of-business applications do not offer a customization mechanism to take advantage of docSTAR's application programming interface (API), **Integration Agent**. Furthermore, customizations may be possible but prohibitively expensive. That was until now...

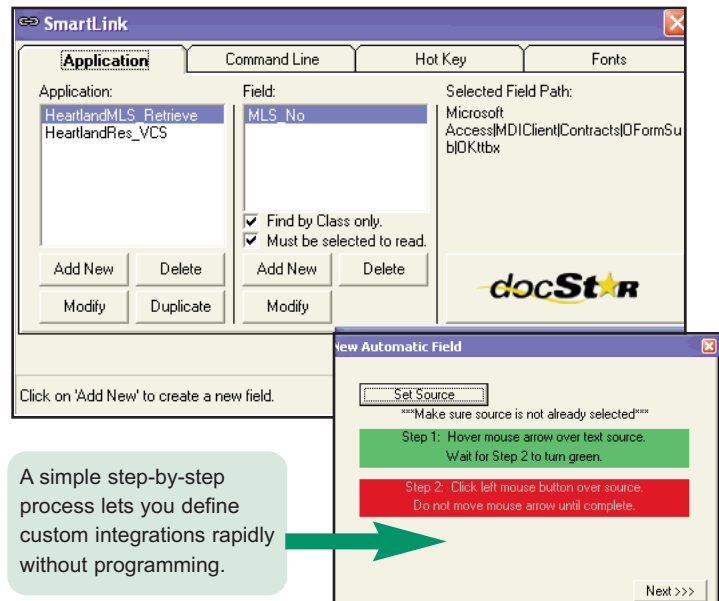
docSTAR SmartLink provides an easy and fast way to integrate with almost any Windows-based or browser-based application **without coding or programming**. When custom code cannot be added to your existing business application, SmartLink may be the bridge between the target application and Integration Agent.

SmartLink grabs data right from the screen of the line of business application. Generally, if you can read it, SmartLink can grab it and use it to retrieve related documents or to generate a virtual cover sheet.

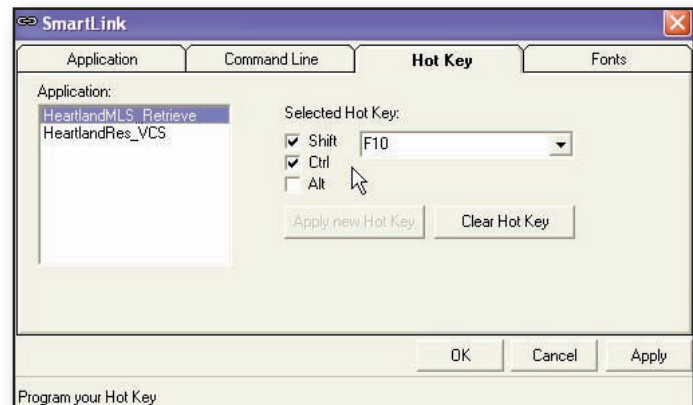
**Get Connected.**

SmartLink will allow your business to work easier, faster, and smarter. *Get connected today!*

**No Programming Required**



**Easy Configuration**



SmartLink's 'Point & Click' interface allows you specify which data in the integrated application should be used to file and retrieve documents.

**System Requirements**

docSTAR host, version 3.7.7 or later is recommended. (SmartLink will work with older versions - contact your docSTAR Reseller or docSTAR for more information.)

SmartLink is sold as a separate module.

SmartLink requires Integration Agent module.

Windows 2000 Server or 2003 Server operating system.

Industry Specific Products - some include SmartLink. Contact your Reseller or docSTAR.



2165 Technology Drive • Schenectady, NY 12308  
518.346.7799 • 800.367.5906 • [www.docstar.com](http://www.docstar.com)