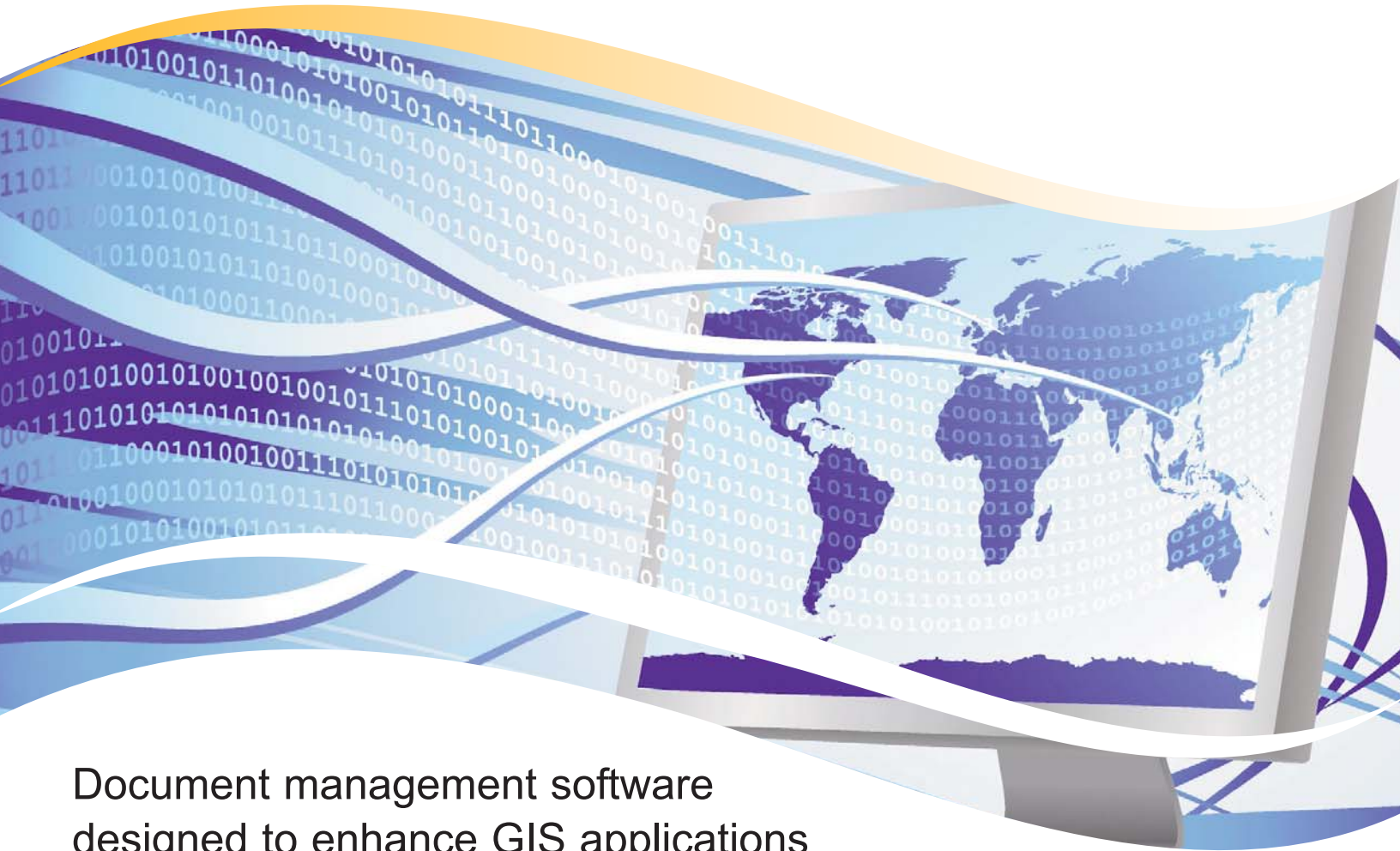


# docSTAR™ MapConnect.

*Bringing GIS and Documents Together.*



## Document management software designed to enhance GIS applications

**docSTAR MapConnect** provides a conduit for organizations to easily view specific Geographic Information System (GIS) spatial information and related documents in seconds. Users can easily access GIS layers and features while instantly displaying related GIS maps, data and documents – all with the click of a button.

### **docSTAR MapConnect**

- ★ Seamless integration with ESRI® ArcGIS® software
- ★ Reduced paper storage and retrieval costs
- ★ Long term document accessibility and preservation
- ★ Web access with GIS tool for document retrieval
- ★ Stand-alone extension available for any ArcGIS Desktop
- ★ Find documents instantly by clicking on parcels or features
- ★ Apply geo-coordinates to groups of documents in a matter of seconds
- ★ Document authenticity secured by the USPS Electronic Postmark (EPM)
- ★ Compliance with many regulations including GASB-34 and NPDES

**Do more with less.**

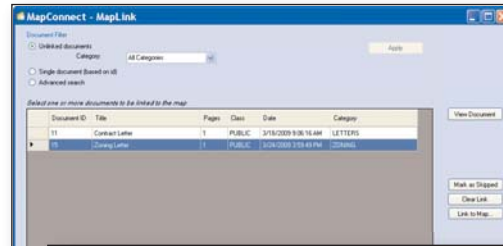
Organizations are faced with the necessity to be more efficient, provide better service, and comply with innumerable regulations and standards. Like most organizations, you are probably drowning in paper. To comply with regulations, you must keep records for several years, which consumes human resources, storage space and increases your costs.

**What can docSTAR MapConnect do for your organization?**

The docSTAR solution speeds up requests for any document in seconds. With docSTAR users can scan, store and retrieve paper documents with ease. docSTAR saves space, guards against theft or damage, and lets staff share documents simultaneously.

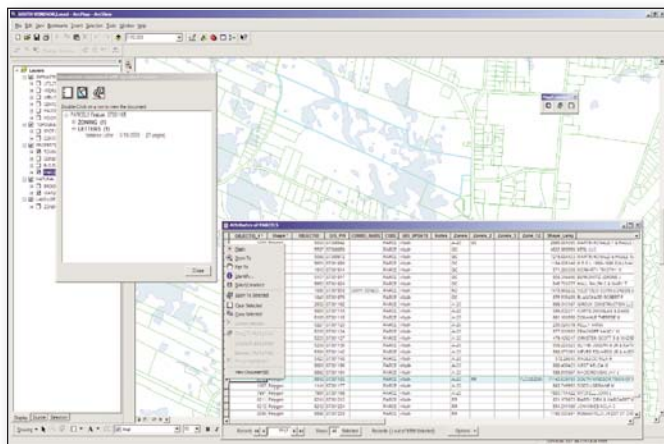
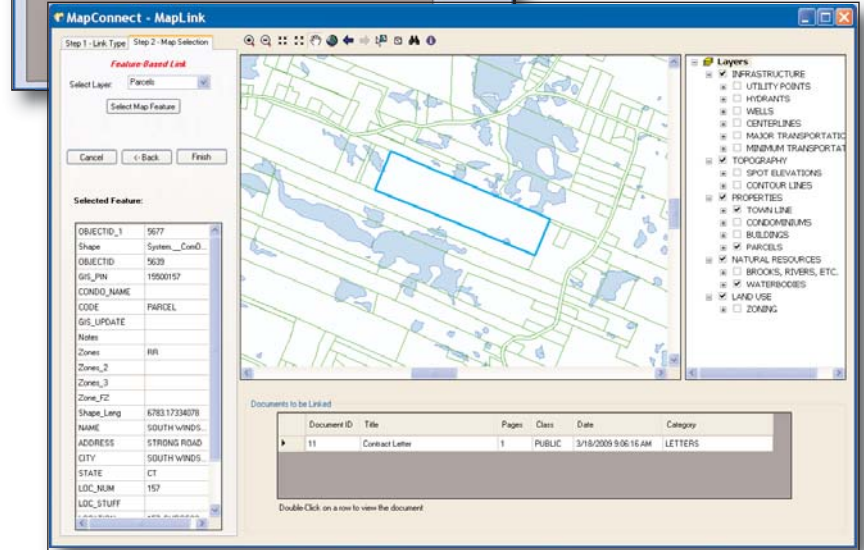
**MapConnect** is a suite of applications that amplifies the capabilities of non-technical people. It provides seamless access to documents stored in docSTAR and GIS information through an intranet portal. Agencies enhance their business by linking important documents to GIS maps and data. With our web-based portal, your spatially enabled documents are accessible 24/7 via any computer with an Internet browser.

docSTAR MapConnect offers the following:  
**All your critical data in one place.**



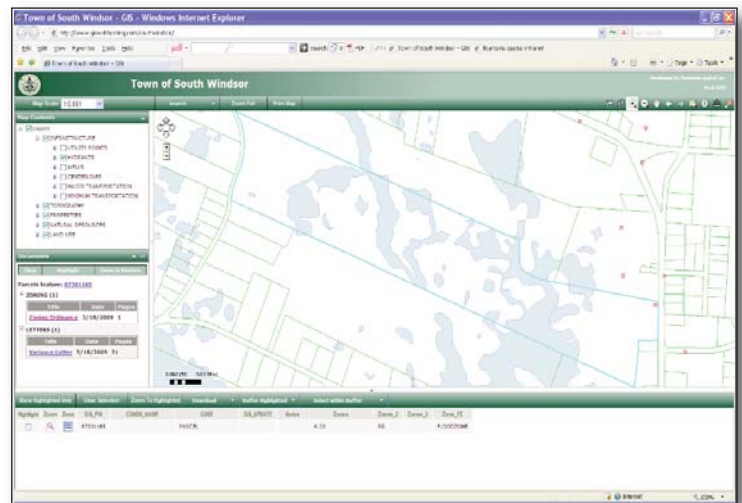
**MapLink™**

Once a document is filed in docSTAR, MapLink allows the user to quickly link documents to geographic features (e.g., parcels) or general areas.



**ArcMap™ Toolbar**

For ESRI® ArcGIS® Desktop users, the MapConnect toolbar allows GIS professionals to geographically retrieve documents without ever leaving their GIS software.



**MapView™**

MapView is web-based mapping application which allows users to geographically retrieve documents associated with features.